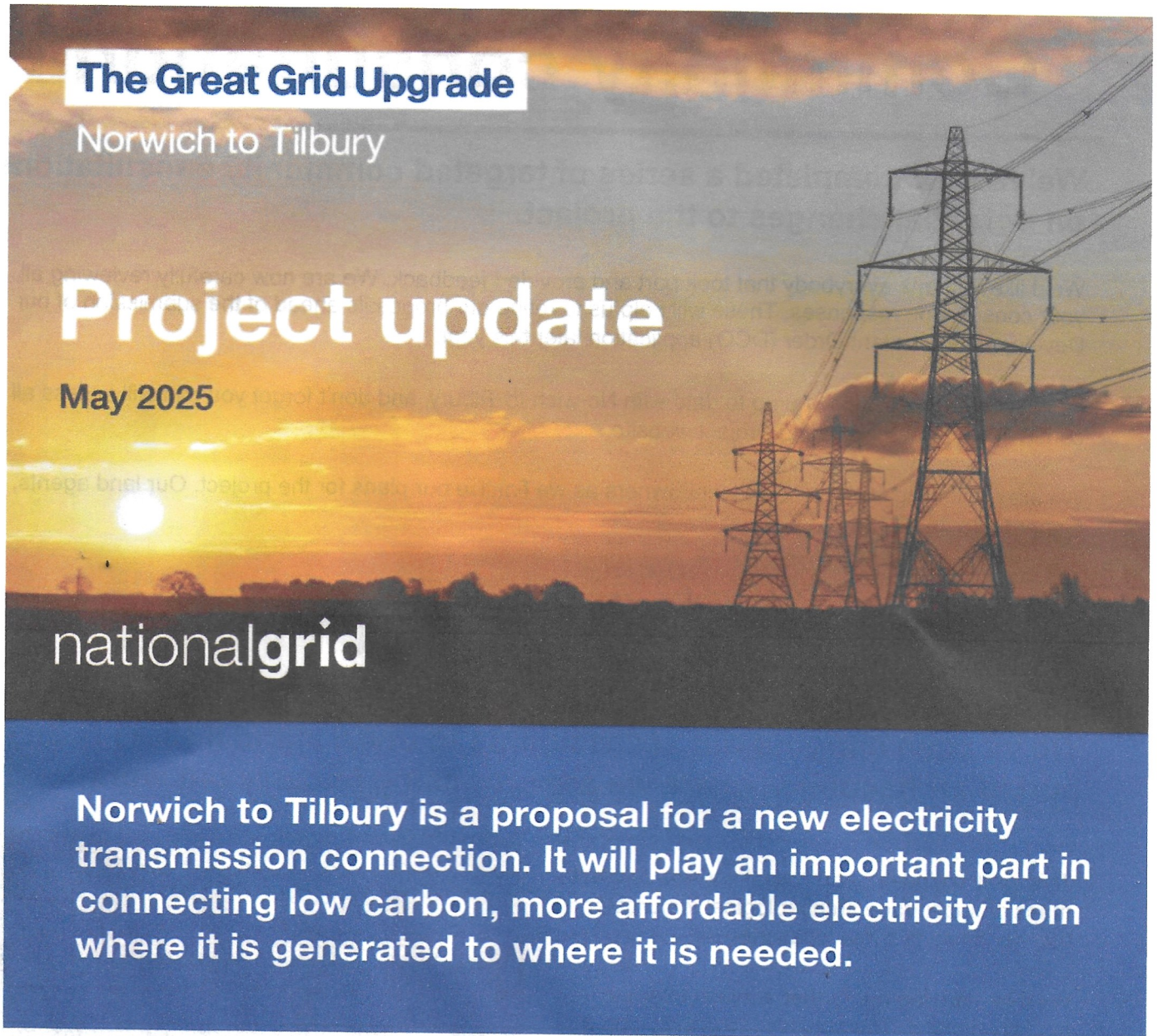
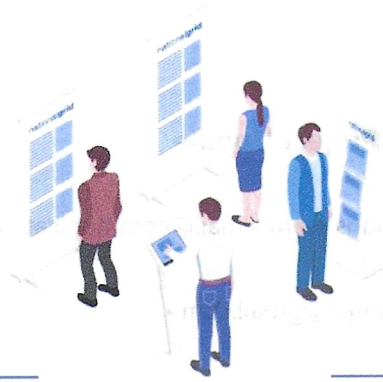

Norwich to Tilbury - May 2025 Project Update

From National Grid community relations team <mail@communications.nationalgrid.com>

Date Fri 16/05/25 17:03

To Susan Frankis <clerk.coddenhampc@gmail.com>





Community consultations

We've now completed a series of targeted community consultations on potential changes to the project.

We'd like to thank everybody that took part and provided feedback. We are now carefully reviewing all your consultation responses. These will help us to refine our proposals ahead of the submission of our Development Consent Order (DCO) application later this year.

We will continue to keep you up to date with Norwich to Tilbury, and don't forget you can still access all consultation materials via the Project website.

We are continuing to engage with landowners as we finalise our plans for the project. Our land agents, Fisher German, will be in touch.

Archaeology surveys

We've been carrying out assessments to understand if there is any buried archaeology where we are proposing to carry out work.

This work includes geophysical surveys to create maps of subsurface archaeological features and trial trenching in some locations.

We'll be carrying out further surveys over the next six months. The surveys involve digging a series of trenches roughly 20 metres long and 1.8 metres wide at carefully selected sites. Each trench will be assessed by our survey team for any potential buried archaeology and inspected and signed off by representatives from the relevant local authority before being filled back in.



We will notify parish councils and publish more information on our project website to keep local communities informed, and we will work to minimise any disruption as we carry out these important studies.



Next steps

We are starting to prepare our application for development consent. This will include our Consultation Report which will set out how we have considered the feedback from the summer 2024 statutory consultation along with our targeted consultations.

Once submitted, the Planning Inspectorate has up to 28 days to decide whether or not the application meets the standards required to be accepted for examination.

The Secretary of State has up to three months to make a decision on whether to grant or refuse development consent. The whole process is expected to take around 18 months.

If accepted, it will go through a six-month examination period. The Planning Inspectorate will then prepare a report on the application along with their recommendation for the Secretary of State to consider.

You can find out more on our [Project website](#).

